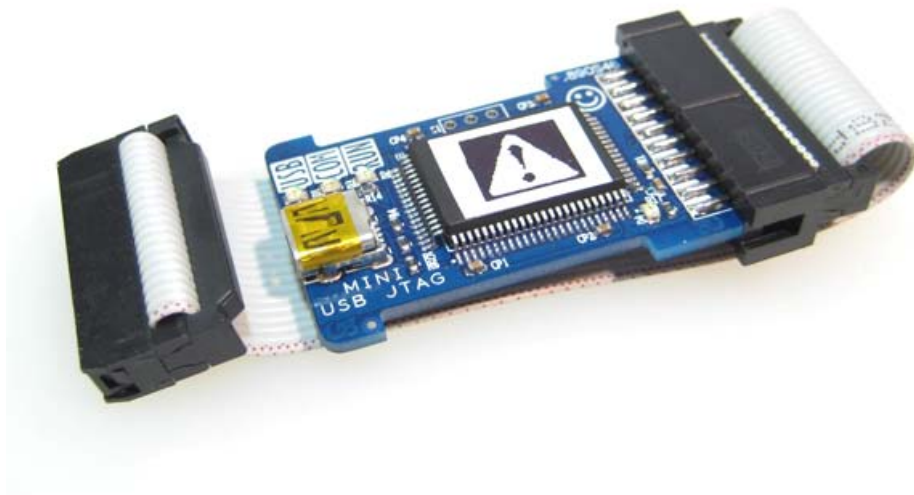


# USB

## ARM JTAG-ICE Debugger and Programmer



Model No.: MDUSBARMDPMINI

**User Guide**

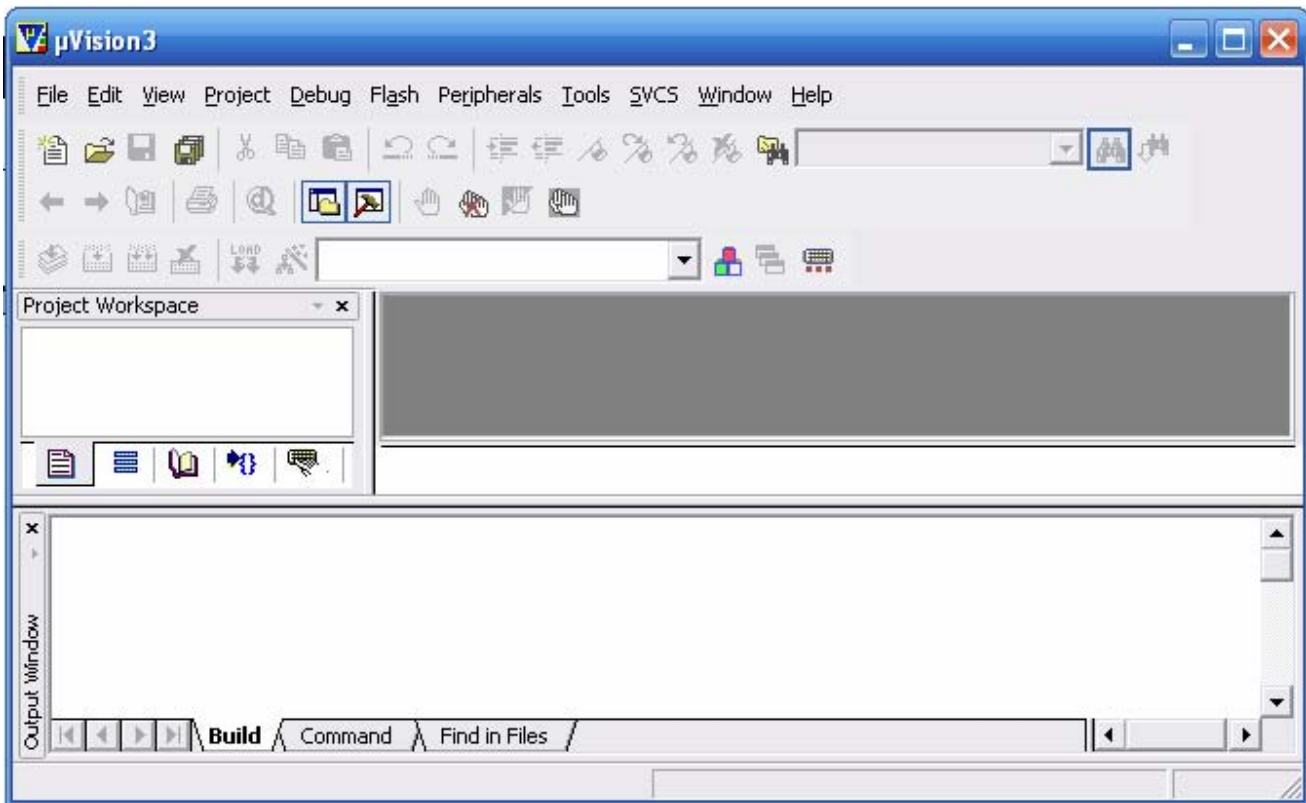
---

### System requirements

- Windows 98, XP, 2000 or Vista
- CD-ROM drive
- USB Port
- Keil uVision3 IDE/Debugger Software

## Driver Installation

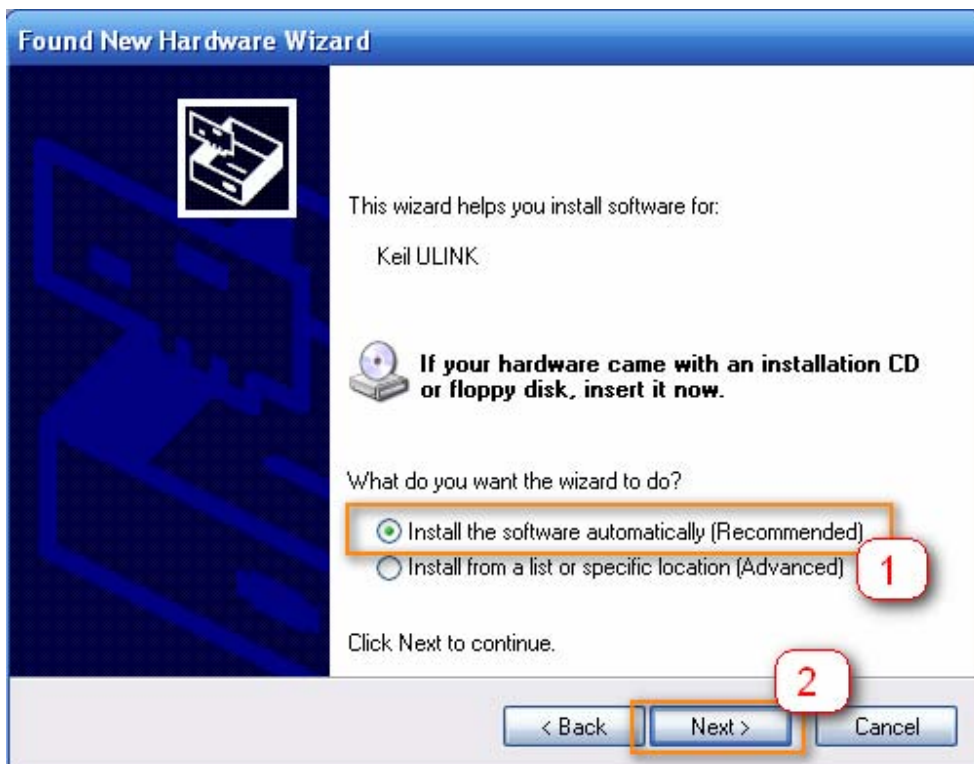
- 1 To install the driver, you need to install the Keil uVision3 IDE/Debugger software.



- 2 Connect the ARM JTAG-ICE Programmer/Debugger to your PC via USB port.

Windows will detect a new hardware.



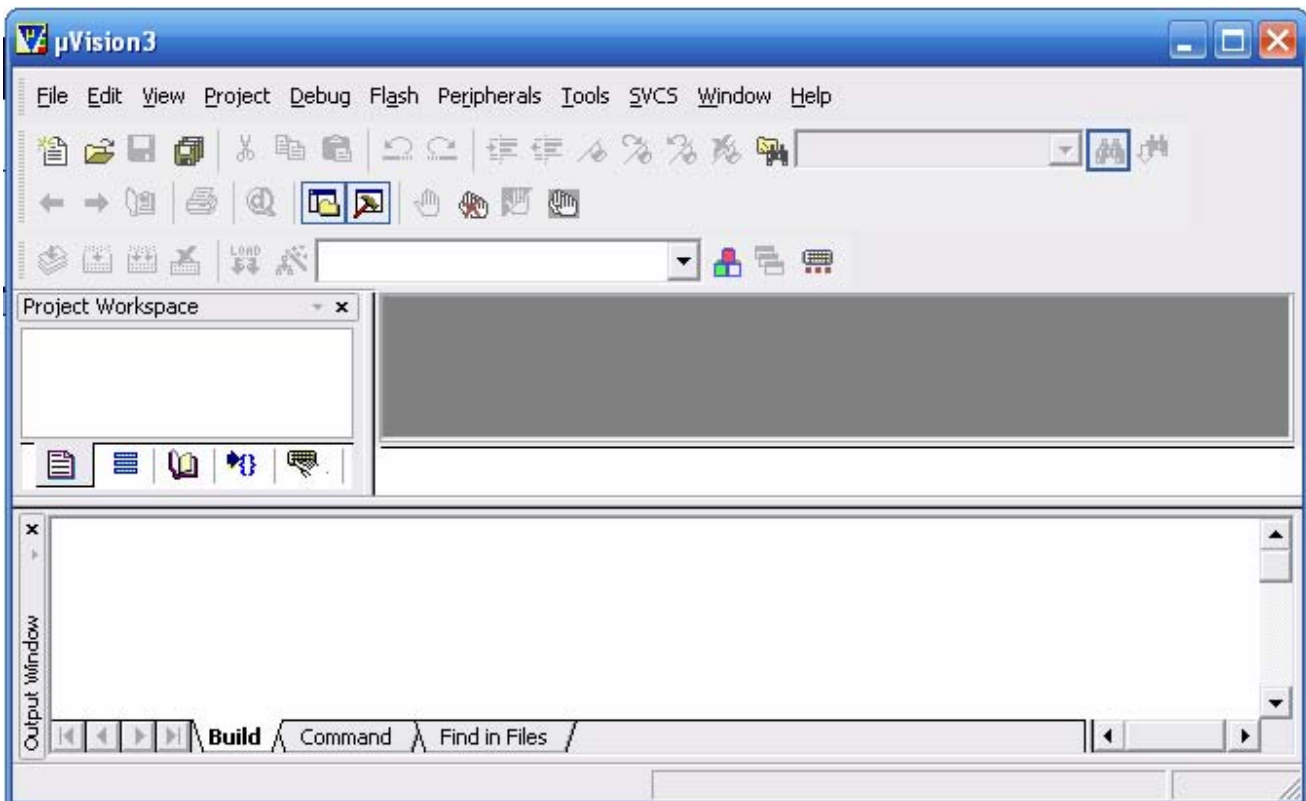


Windows will automatically install the driver for device.

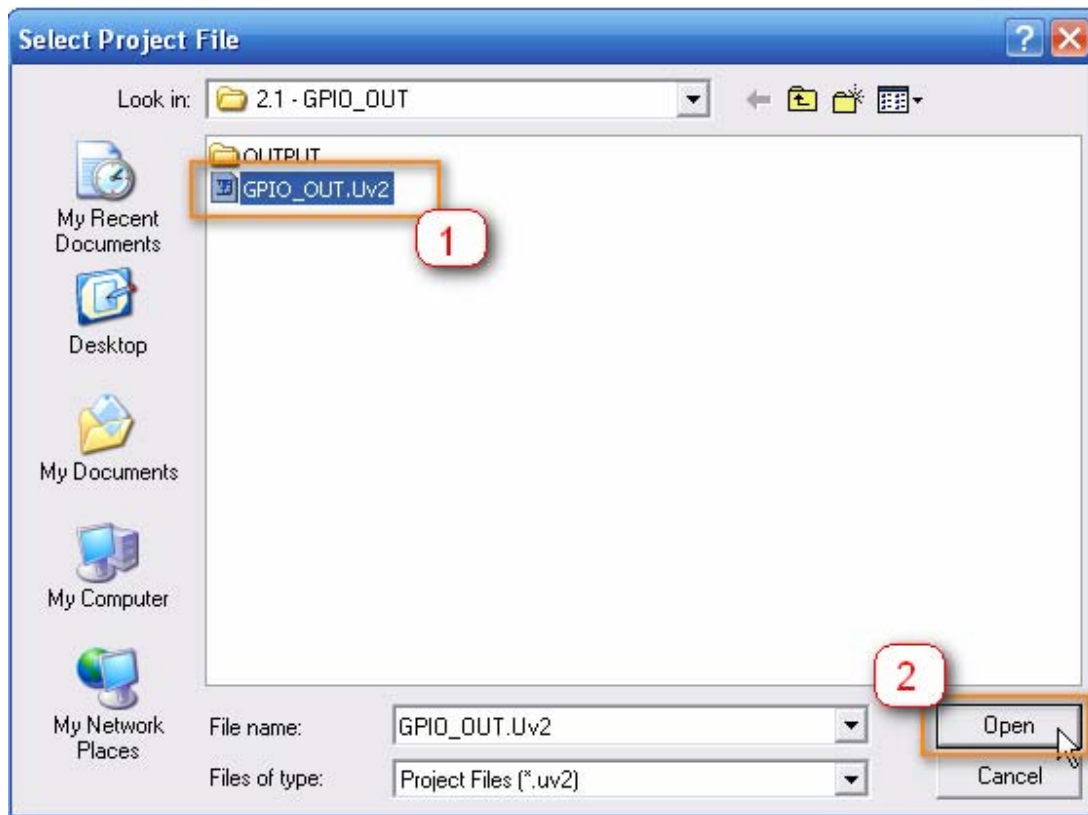
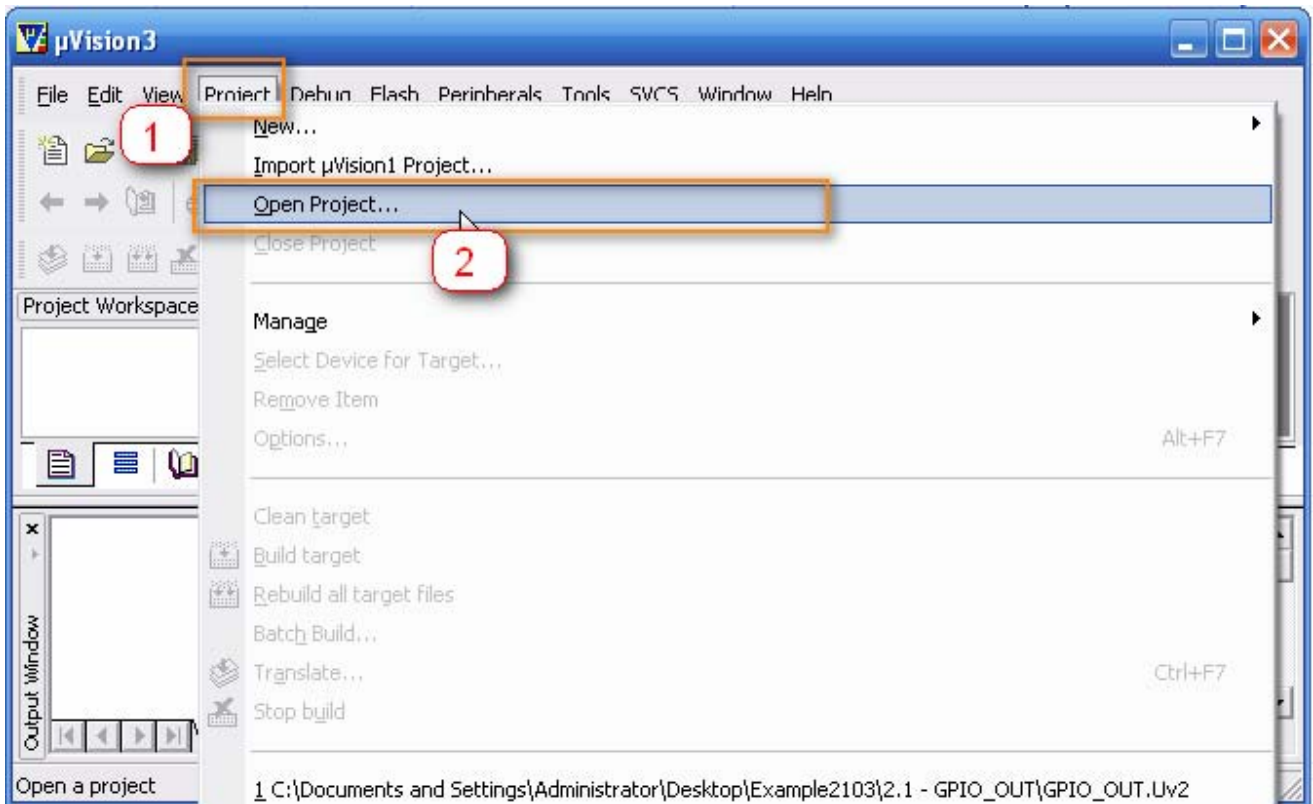
## Hardware Configuration

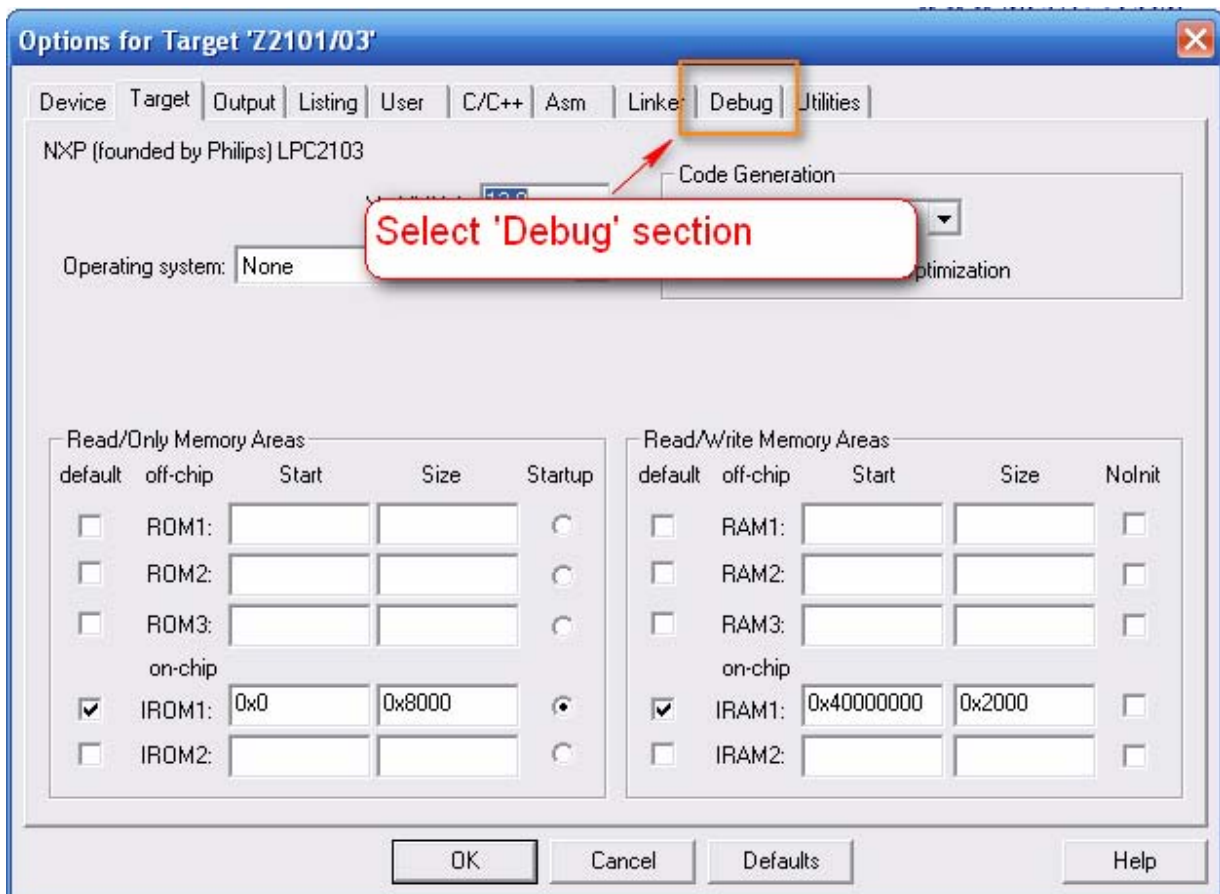
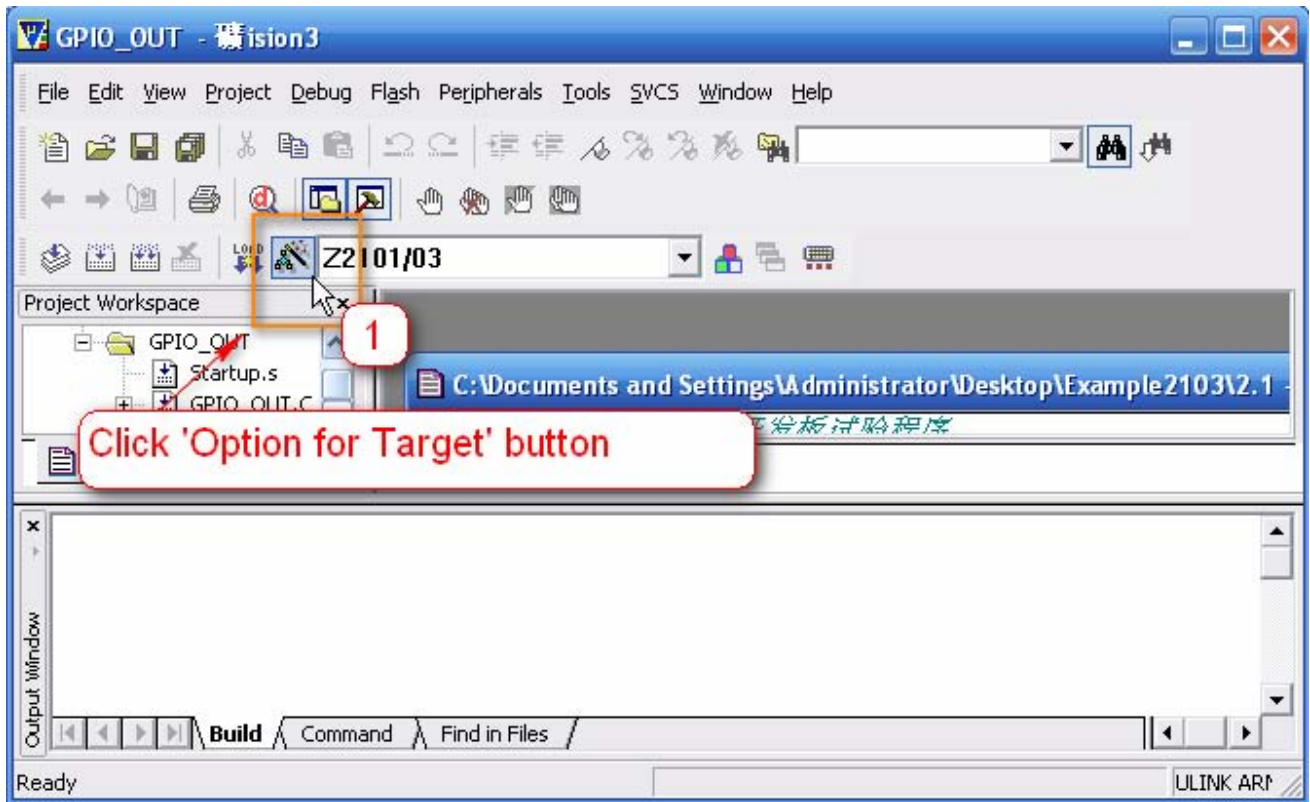
1. Hardware Configuration is the basal setting to configure the ARM JTAG-ICE Programmer/Debugger, this section dose not include usage of uVision3 IDE/Debugger software.

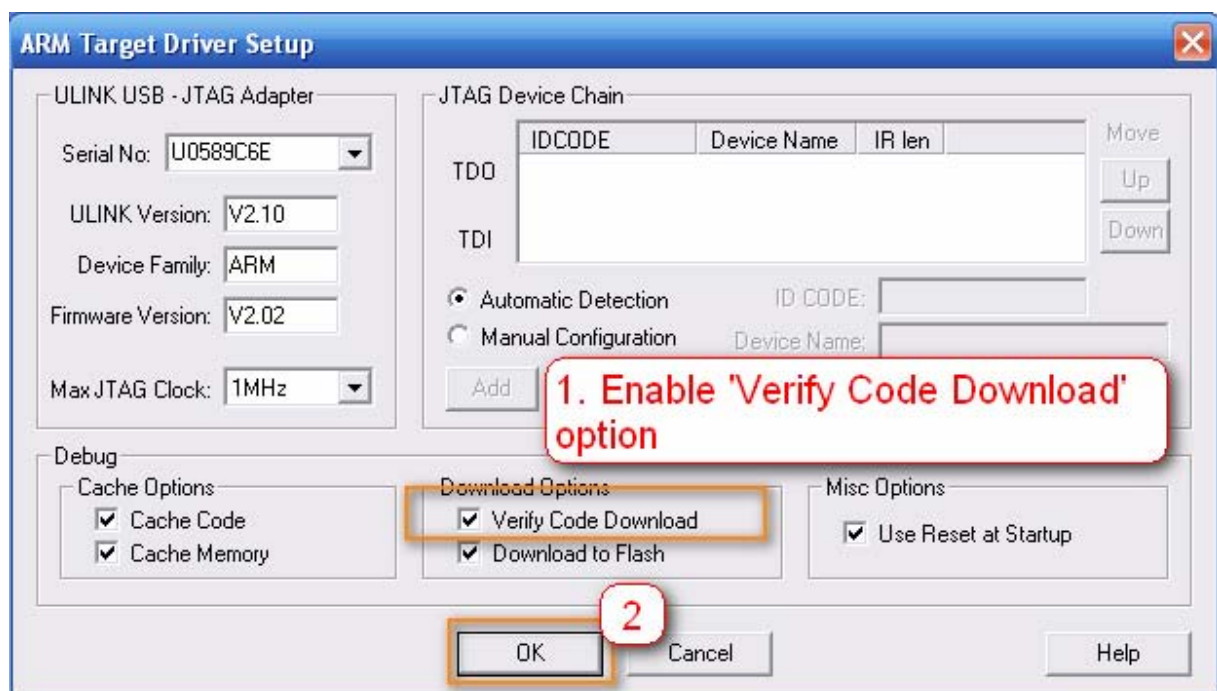
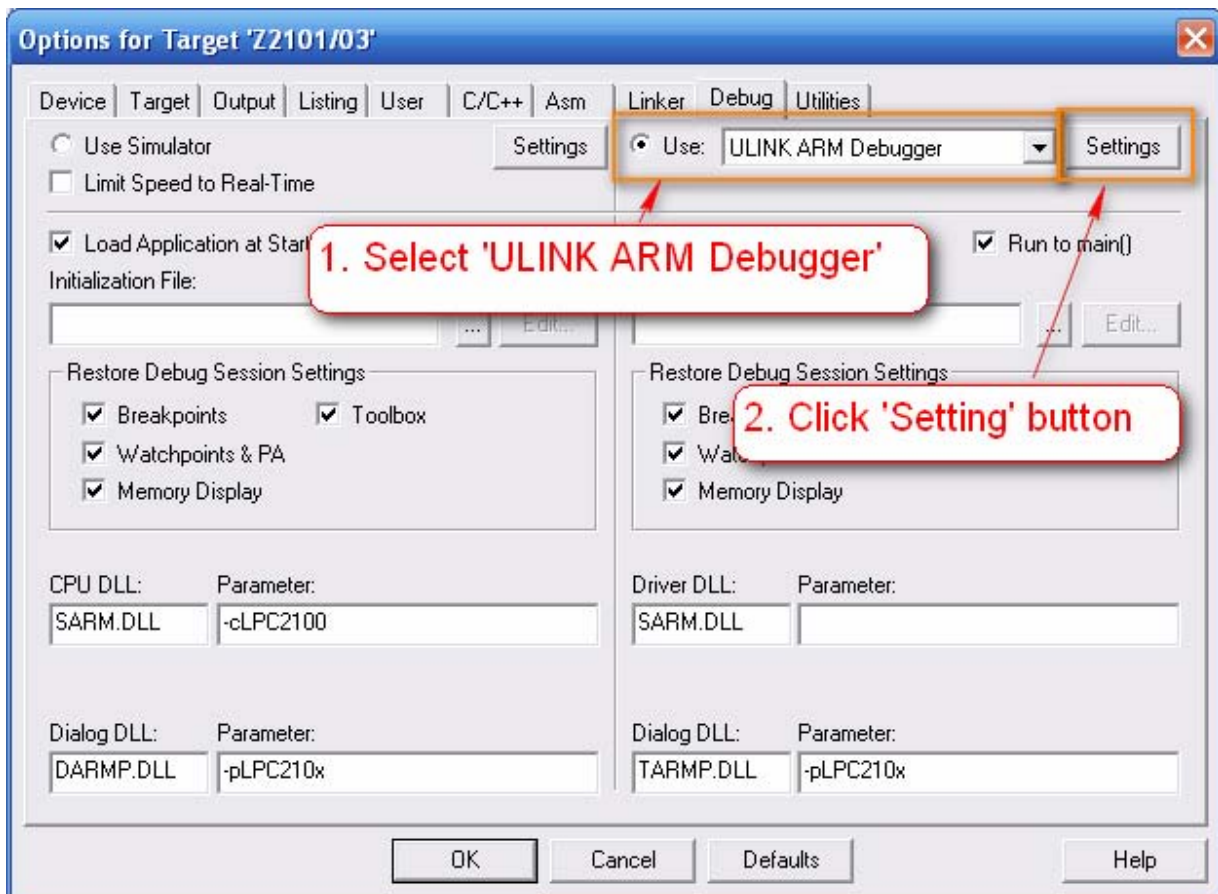
Run the Keil uvision3 IDE/Debugger software:

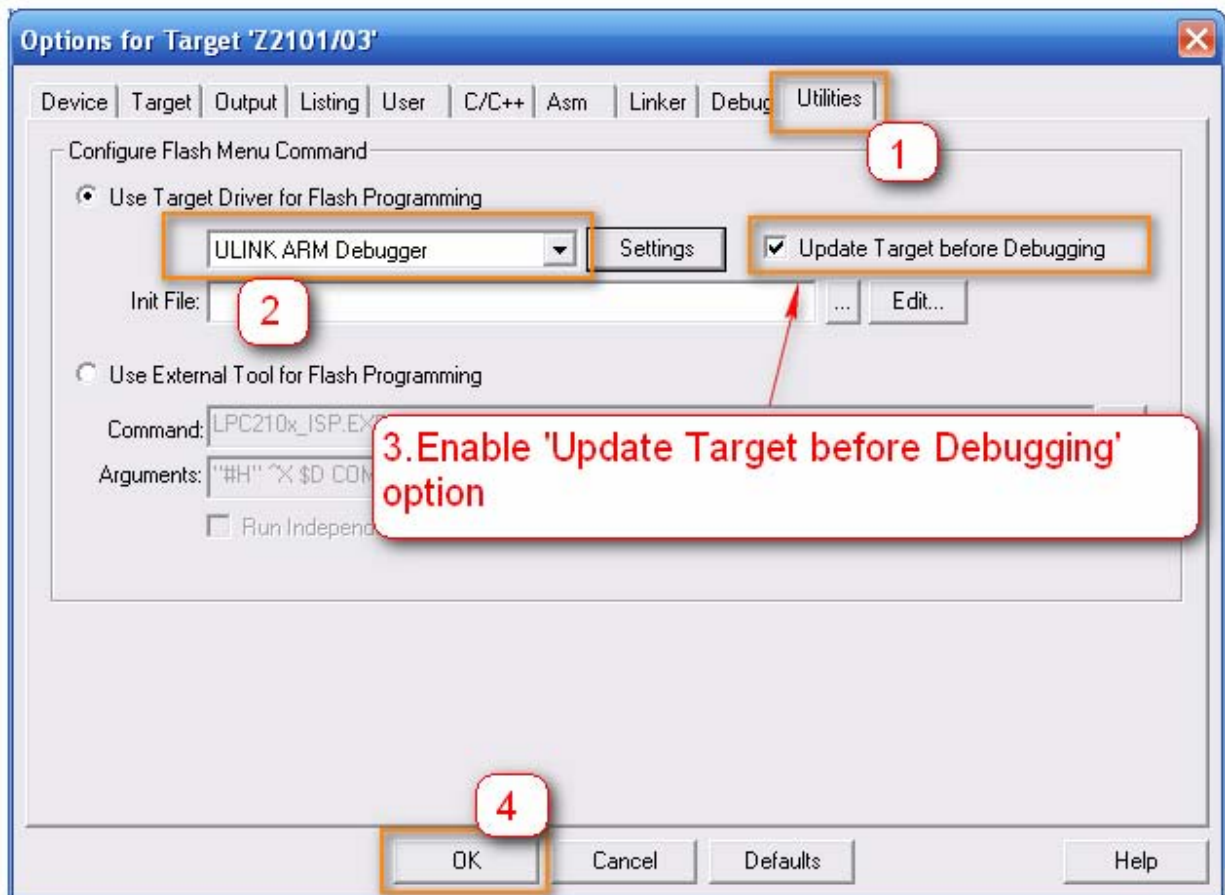


- 2 Open a project:





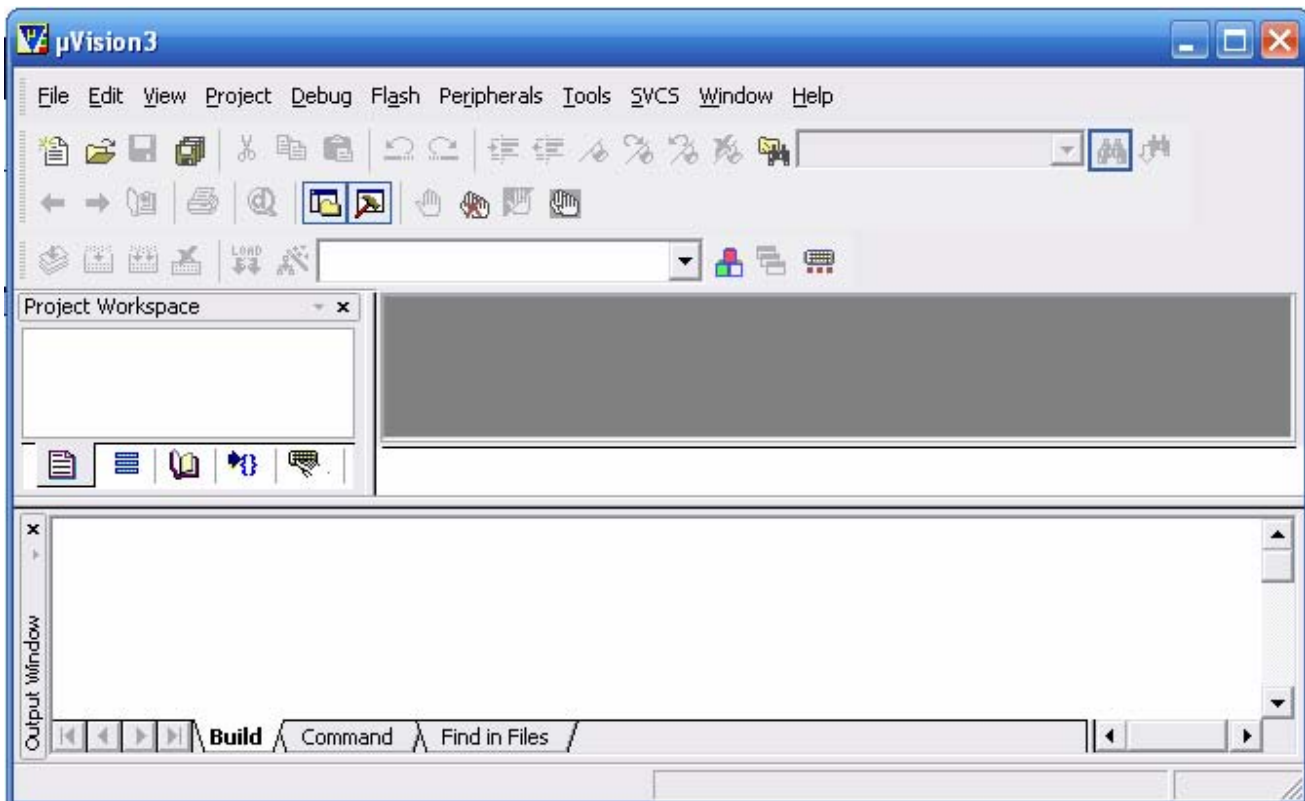




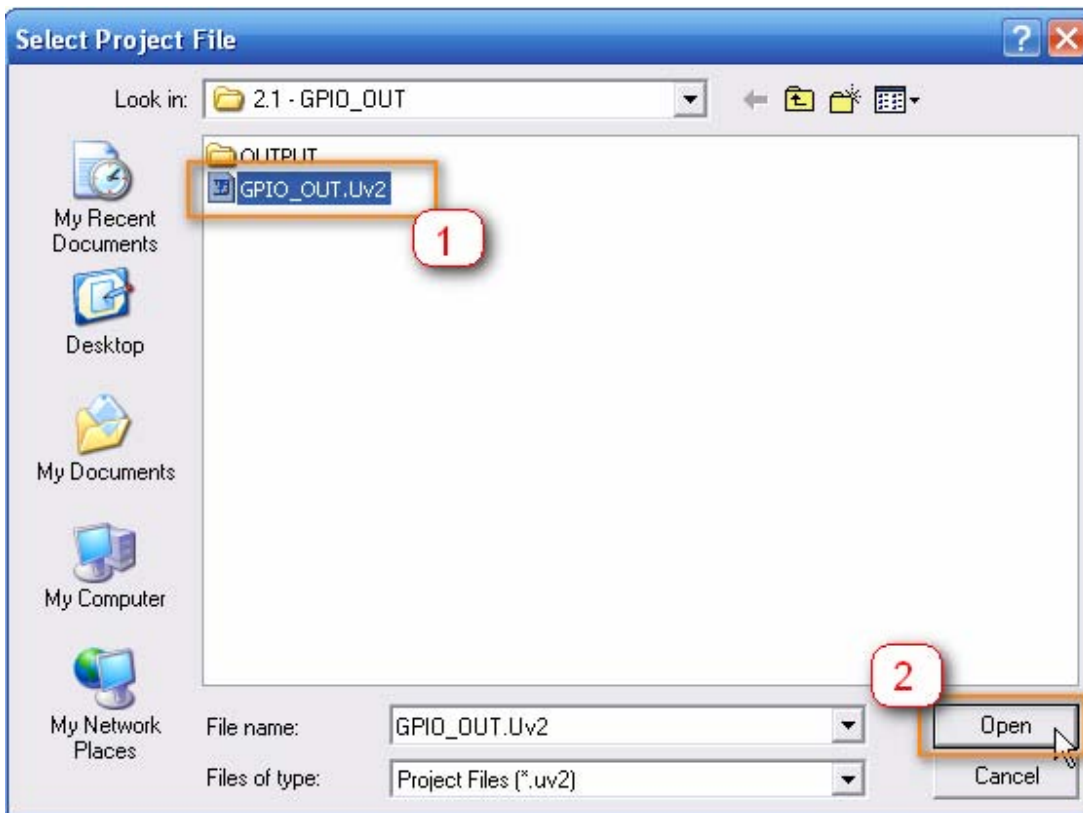
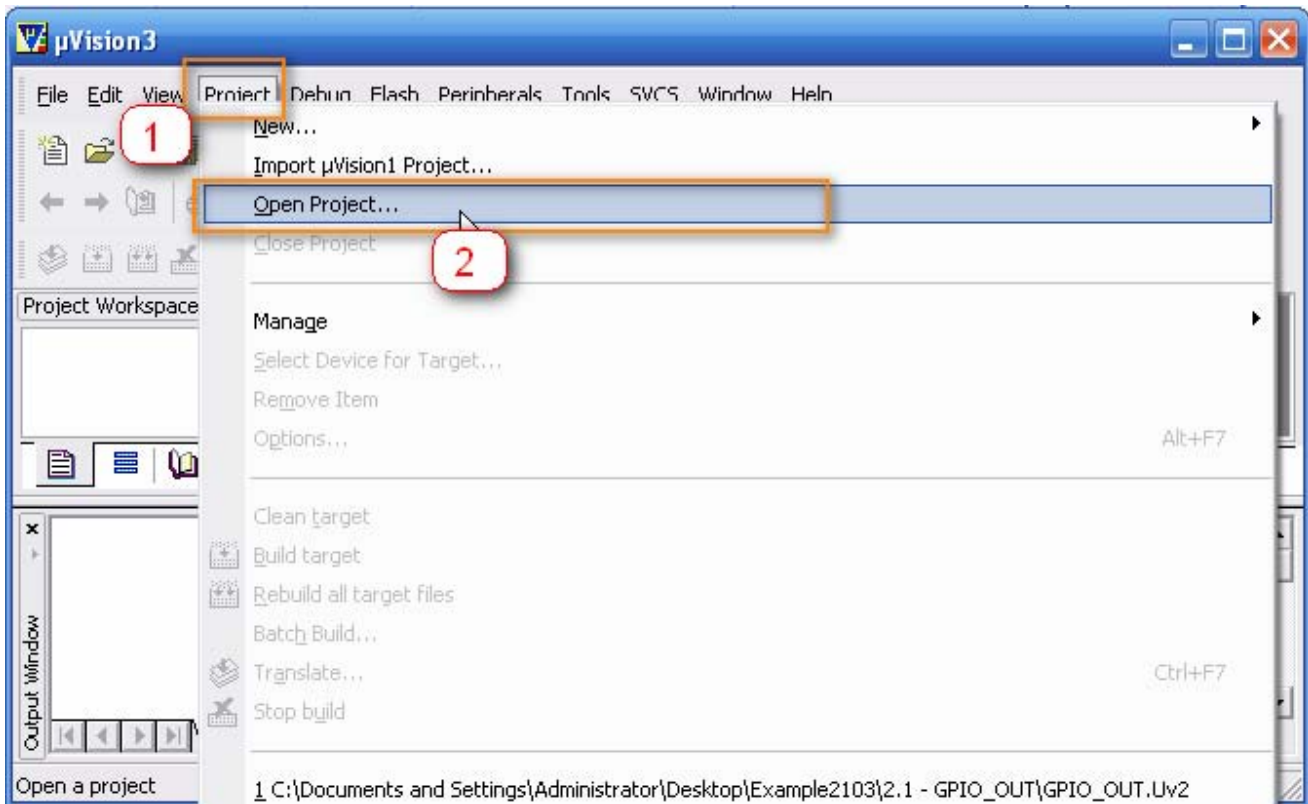
Now, ARM JTAG-ICE Debugger/Programmer is ready to be used.

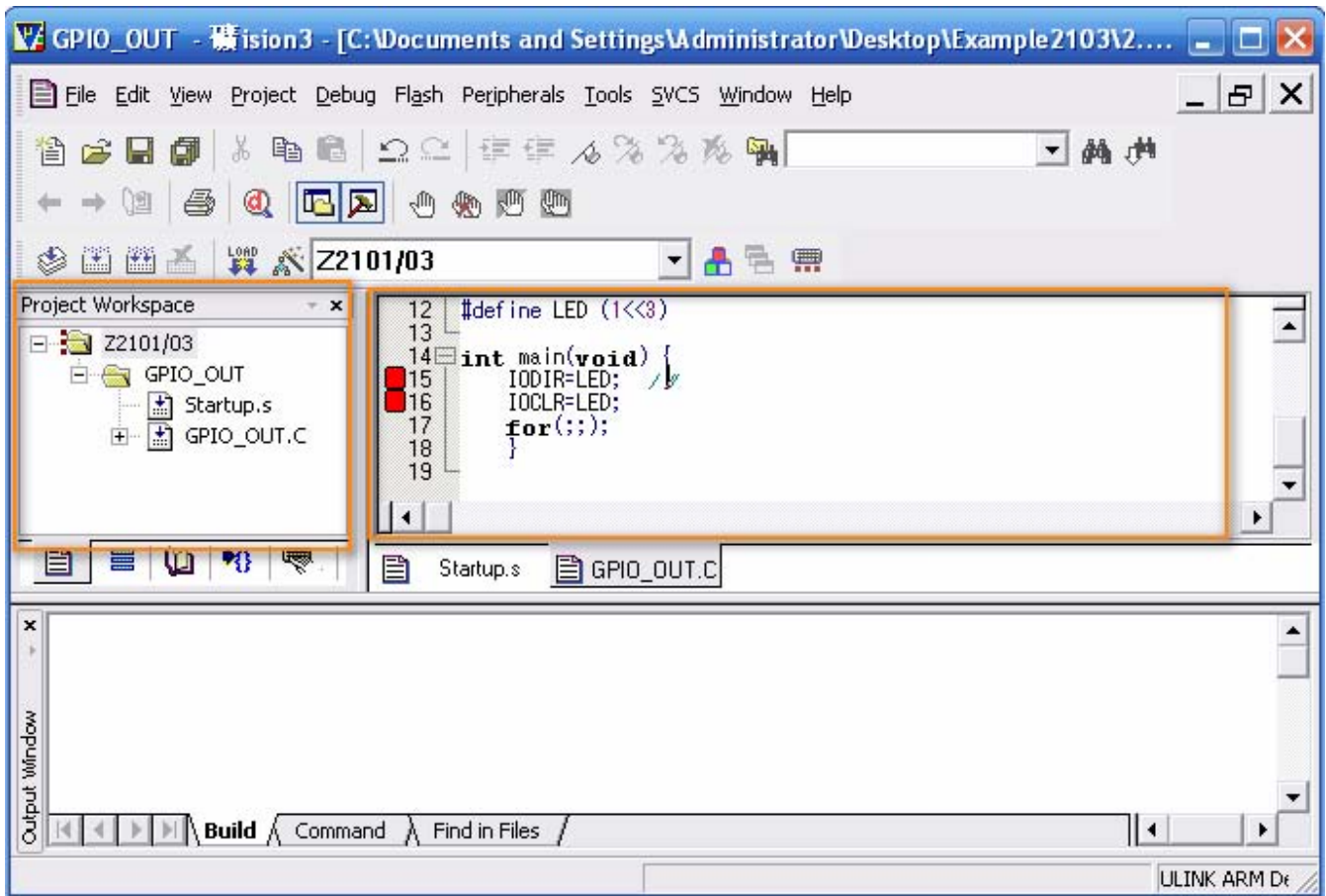
## Debugging and Programming

1. Connect the ARM JTAG-ICE Debugger/Programmer to the Host PC.
2. Connect the ARM JTAG-ICE Debugger/Programmer to your target board ARM JTAG interface.
3. Power up your target board.
4. Run the Keil uVision3 IDE/Debugger software.

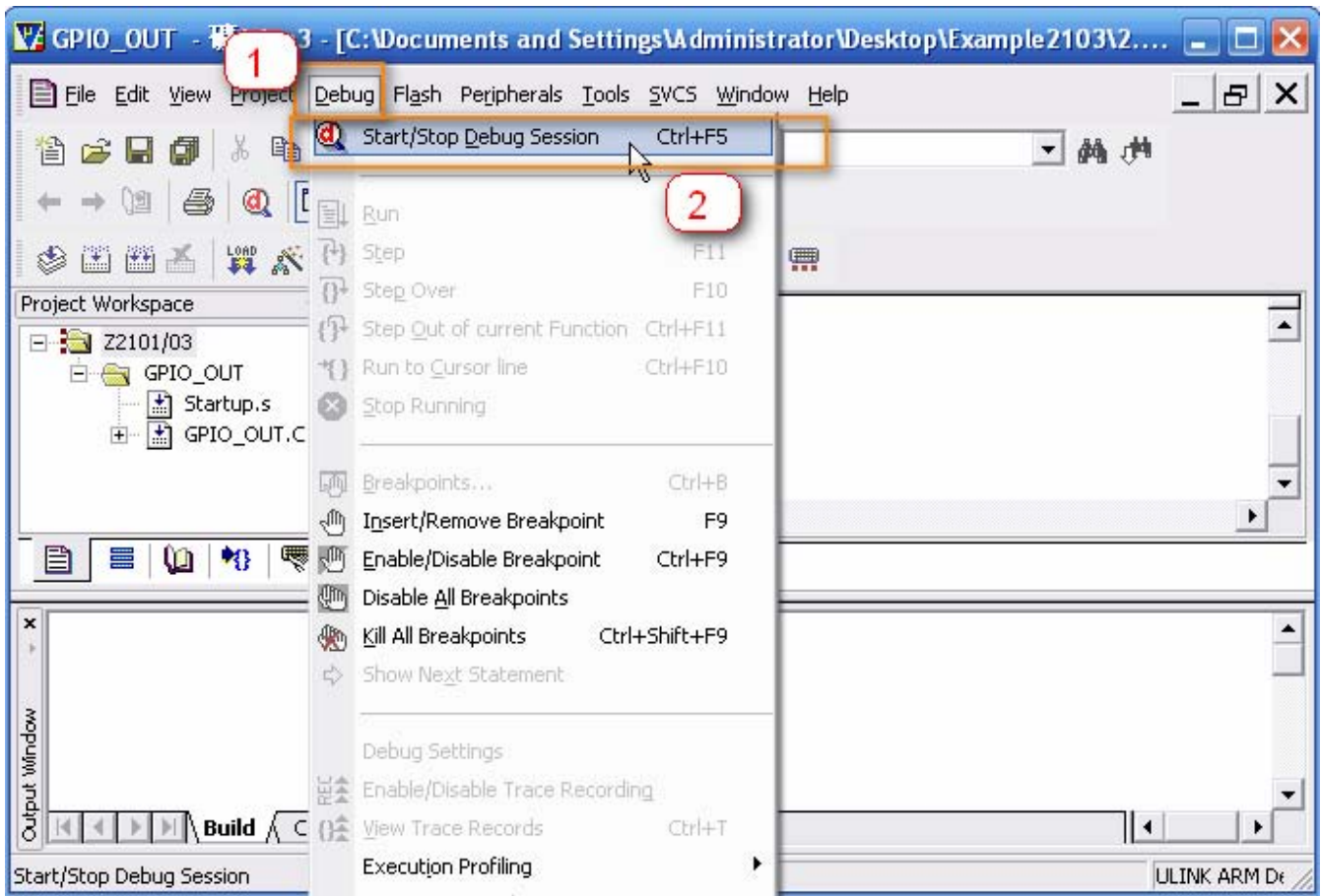


5. Open a project (Example: MDFLY ARM LPC2013 Development board and sample code).

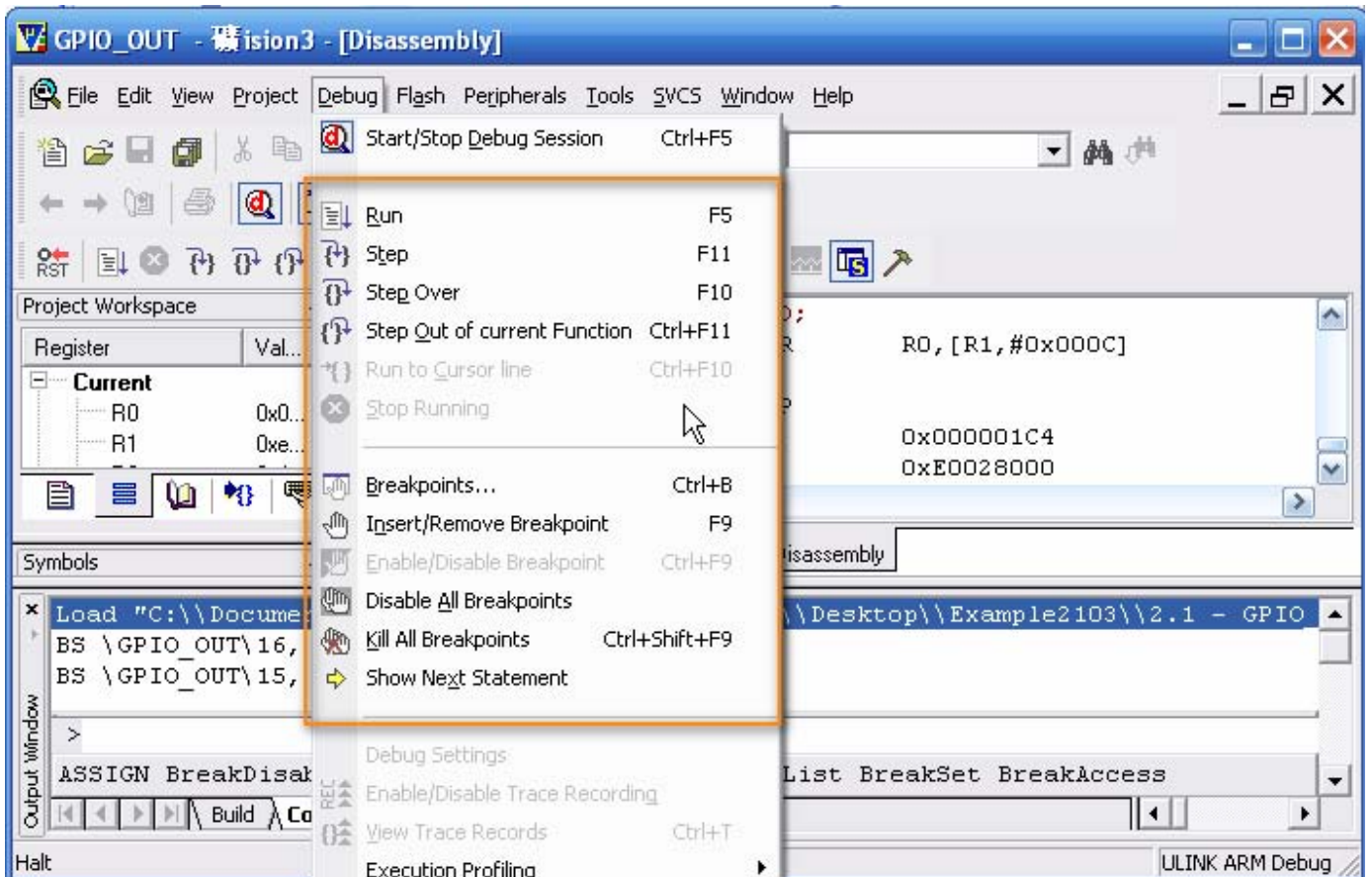




## 6. Debugging:



Start Debug Session, sample code will be automatically downloaded to your target device.



## 7. Programming:

If you want to download the sample code to your target board device, you need to stop the debug session first.

